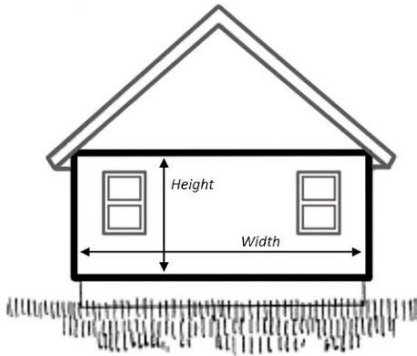
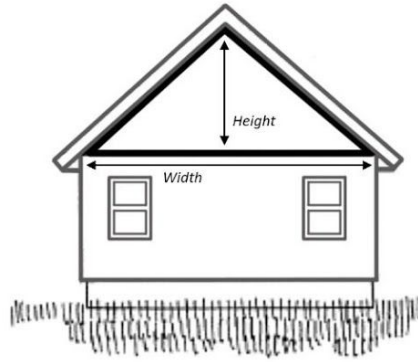


Standard Siding Measuring Sheet



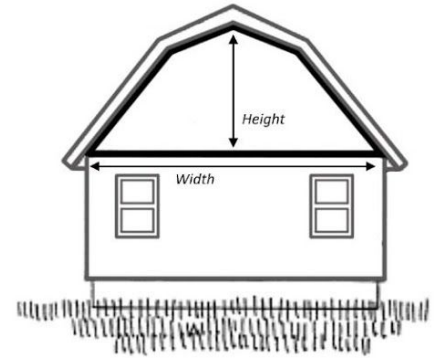
Standard wall

Height x Width x 110% = Square footage
Allows for scrap factor



Standard gable wall

Height x Width x 66.5% = Square footage
Allows for scrap factor



Barn style gable wall

Height x Width x 86% = Square footage
Allows for scrap factor

Once, you have measured all of the individual areas, total measurements and divide total number by 100. This will equal total number of squares required to complete the job. Always round up to the higher whole number.

Example:

Front side	=	360
Right side	=	192
Back side	=	360
Left side	=	192
Right gable	=	128
Left gable	=	<u>128</u>

Total for all sides 1,360 total square feet divide by 100 = 13.6 squares of siding
(Round up to 14 squares)

Windows and doors are not typically deducted. Including them will provide an allowance for waste. Larger opens such as patio or garage doors may require some deduction.

Please remember that these are standard guidelines and every house may vary. If unsure, please contact a local siding professional for assistance.